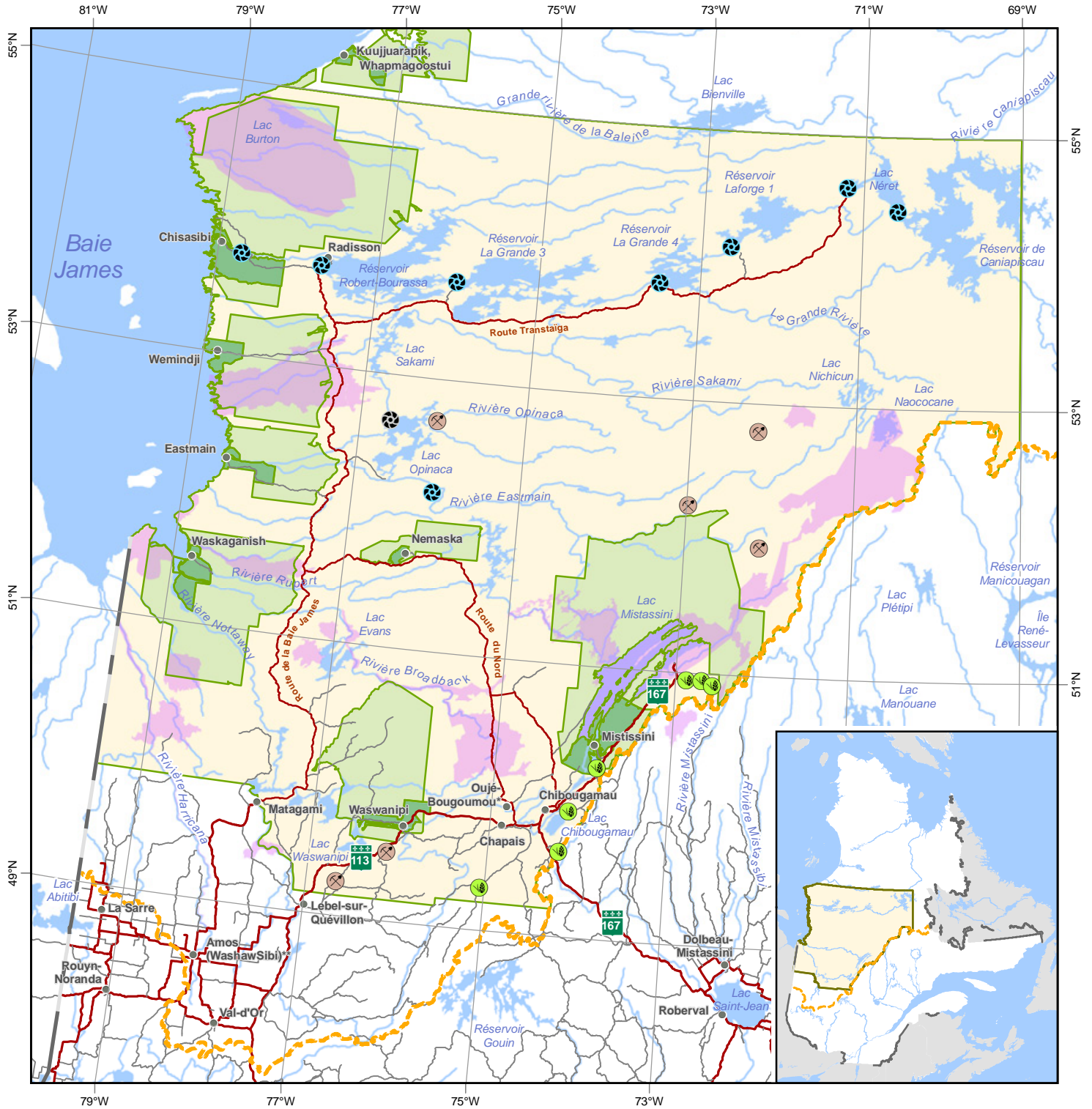


Territory covered by the environmental and social protection regime



Limits

- Territory covered by the regime ¹
- Cree Category I lands
- Cree Category II lands
- Southern limit of JBNQA Territory

- Border

Infrastructures

- Mining project
- Hydroelectric power station
- Hydroelectric power station in construction

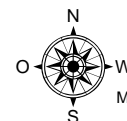
Conservation areas

- Exceptional forest ecosystem
- Protected area

- ¹ The Crees do not recognize the southern limit of the regime as defined on this map
- * Oujé-Bougoumou Category I and II lands are under negotiation
- ** The Washaw Sibi Eeyou Association is temporarily based in Amos

Sources

- Land division, mine site, MRNF-Québec, 2011
- Exceptional forest ecosystem, MRNF-Québec, 2011
- Protected area, MDDEP, 2011
- Hydroelectric infrastructures, CEHQ, 2011



0 45 90 km

Scale : 1 : 4 500 000

Map projection : Conique de Lambert, NAD83
Produced by : Groupe Nippour, June 2011



Comité consultatif pour l'environnement de la Baie James
James Bay Advisory Committee on the Environment
ᑕᑕᑕᑕᑕᑕ ᑕᑕᑕᑕᑕᑕ ᑕᑕᑕᑕᑕᑕ ᑕᑕᑕᑕᑕᑕ