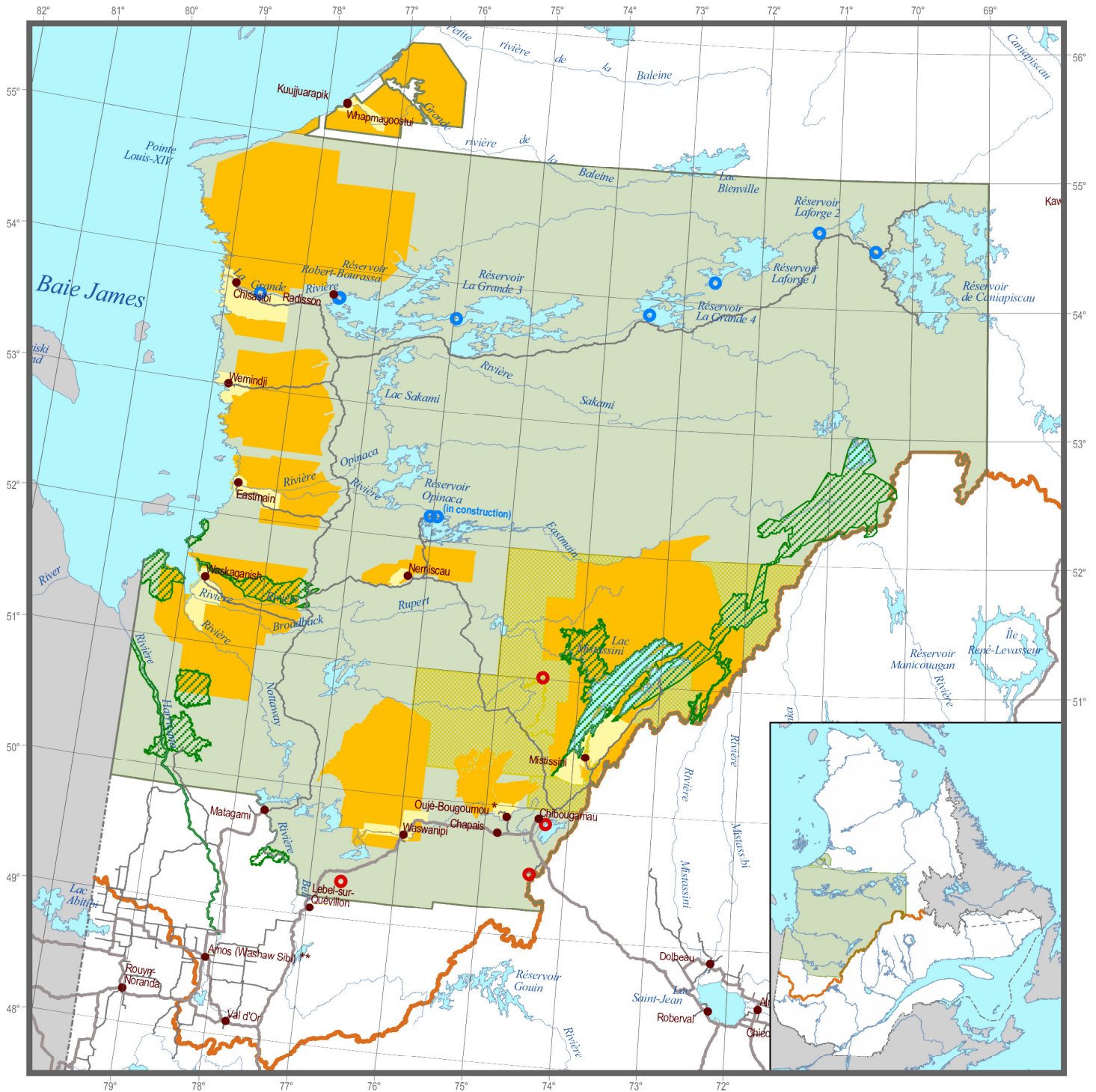


Territory covered by the environmental and social protection regime



- Territory covered by the regime
- Cree Category I lands
- Cree Category II lands
- Southern limit of JBNQA Territory
- Interprovincial border

* Oujé-Bougoumou Category I and II lands are under negotiation
 ** The Washaw Sibi Eeyou Association is temporarily based in Amos

Sources

Land Division, wildlife area and mine site	MRNF	2007
Protected area	MDDEP	2007

Produced by

Direction générale de l'information géographique
 Ministère des Ressources naturelles et de la Faune, May 2007

Metadata

Map Projection Lambert Conic Conformal with two true-scale parallels maintained (40th and 60th)

- Hydroelectric power station
- Active mine site
- Wildlife sanctuary
- Protected area

0 100 km



Comité consultatif pour l'environnement de la Baie James
 James Bay Advisory Committee on the Environment
 ᑕᑭᑦᑭᑦᑭᑦ ᑕᑦᑭᑦᑭᑦ ᑕᑦᑭᑦᑭᑦ ᑕᑦᑭᑦᑭᑦ ᑕᑦᑭᑦᑭᑦ